

Celebrating 15 Years

ISLP International Senior  
Lawyers Project

2015  
Annual  
Report





International Senior  
Lawyers Project



## Table of Contents

/ 2	Mission
/ 3	Letter from the Executive Director
/ 4	Areas of Focus
/ 6	Global Reach
/ 8	Snapshot: 2015 Program Work
/ 10	Celebrating 15 Years
/ 13	Leadership: Natural Resource Management
/ 15	Spotlight: Myanmar
/ 16	Spotlight: East Africa
/ 18	Leadership: Impact Investing
/ 21	Case Study: AGOA
/ 22	NGO Partners
/ 24	Legal Partners
/ 27	Donors
/ 28	Financials
/ 30	ISLP Board
/ 32	ISLP Staff

## Mission

The International Senior Lawyers Project provides legal assistance to governments and civil society organizations in developing countries.

ISLP's experienced and expert leadership leverages global legal resources in alignment with client needs to support just, accountable and inclusive development.



## Letter from the Executive Director

Katherine Mulhern, Executive Director

*This past year has been an exciting one for ISLP. As the organization celebrated its 15th Anniversary, staff and board gave considerable thought to our value in the world, and how the field has changed since our founding. ISLP's leadership has helped reshape the way in which pro bono is used to impact big issues, such as natural resource management, as well as how other organizations have also filled the pro bono space to provide important services. In the interim, having matured as an organization and recognized where we can make the strongest contribution, ISLP has emerged with a new strategy, a refined mission, and a tremendous energy behind the goal of advancing just, accountable and inclusive development.*

*Though I have been in the role of Executive Director for only half a year, I have been struck by the tremendous enthusiasm of the board, the extraordinary professionalism of the staff, and the immense dedication to and affection for the organization shown by the lawyers who donate their expertise and services. Pulling this great energy together, ISLP has terrific potential to influence the historical moment in which our clients find themselves, helping them to address challenges brought on by vast growth in communications, downward economic pressures, weakened commodities prices, and increasing concerns over global security. It is in this context that ISLP's novel approaches to complex development-related challenges can level the playing field between developing*

*country governments and affected communities on the one side, and multinational corporations and investors on the other.*

*In many ways, the implementation of ISLP's new strategy is creating exciting and innovative approaches to the work itself. Our extensive legal network affords us the global reach to impact those actors who are on the cutting edge of the debate as to what constitutes just, accountable and inclusive development, particularly governments in transition tackling complex and difficult problems, while our dynamic and sophisticated program staff, who have earned us a reputation for being committed advisors, support our clients in shaping strategic direction and reaching milestone goals. This interactive, dynamic process, in the context of a changing security and economic landscape, advances ISLP's vision from creating a global law firm that is responsive to clients, to building out an organization that is helping to define what in fact it means to be just, accountable and inclusive.*

*Finally, as our strategy has evolved, so too have our communications. We hope that you enjoy the new look of our annual report, and will take the time to visit our redesigned website, both of which we think do an excellent job of conveying the dynamic and exciting direction the organization has taken.*

## Areas of Focus

*2015 was one of our most important years. With the help of our many stakeholders, including funders, NGO partners, clients, staff, trustees and volunteers, ISLP carried out an internal review to assess its overall impact and ability to meet client's needs. What emerged was the most significant shift in the organization to date, refining ISLP's strategic focus on just, accountable and inclusive development, and strengthening collaboration between the UK and U.S. offices.*

Susan Hazledine, *Director*, ISLP-UK

- Natural Resource Management
- Investment, Trade & Tax
- Civil Society Space
- Community-Inclusive Development
- Economic & Social Development
- Anti-Bribery & Corruption

### Natural Resource Management

ISLP's Natural Resource Management work assists governments in reviewing, analyzing and negotiating contracts with regard to the exploration, development and use of natural resources. Additionally, ISLP helps design and draft legal and regulatory frameworks that encourage fair returns, transparency and accountability, as well as helps to build the capacity of government officials so as to better enable them to implement those frameworks.

### Investment, Trade & Tax

ISLP's Investment, Trade & Tax work provides support on policy issues critically important to developing economies. ISLP's high-level legal advice and capacity-building programs help governments incentivize investment and generate fair revenues to support social services and economic growth, as well as promote local business access to global markets.

### Civil Society Space

ISLP's Civil Society Space work seeks to create and protect space for civil society to operate effectively, particularly with regard to safeguarding its ability to monitor the behavior of government and corporate actors. Building upon the expertise of the Media Freedom Working Group, ISLP helps NGOs and journalists navigate potential legal risks associated with investigative and reporting activities through pre-publication reviews, newsroom-style training and defense in defamation cases.

### Community-Inclusive Development

ISLP's Community-Inclusive Development work empowers local communities at risk of being marginalized or exploited by large-scale natural resource and infrastructure development. By providing legal tools and strategic guidance alongside building local capacity, ISLP helps to ensure communities benefit equitably from development projects that impact their land and traditional livelihoods.

### Economic & Social Development

ISLP's Economic & Social Development work helps build capacity among legal professionals in developing countries, as well as provides legal support to social entrepreneurs in support of sustainable and inclusive economic growth. ISLP's initiatives aim to stimulate social impact investment opportunities and support access to finance for SMEs that embed social benefit into their business models.

### Anti-Bribery & Corruption

Incorporated in much of ISLP's work to date, Anti-Bribery & Corruption is now a defined focus area, which seeks to promote transparency, integrity and accountability in public and private institutions. ISLP provides targeted legal support to both local and international efforts to reverse the corrosive economic, political and social impacts of corruption identified as key barriers to sustainable development.

## Global Reach

Over the past 15 years, with support from law firms, foundations, and government agencies, ISLP has mobilized hundreds of experienced lawyers to provide more than \$100 million worth of pro bono legal assistance in support of just, accountable and inclusive development in more than 80 countries.



/ Afghanistan / Mali  
/ Albania / Mauritania  
/ Angola / Mauritius  
/ Australia / Mexico  
/ Azerbaijan / Mongolia  
/ Bahrain / Montenegro  
/ Bolivia / Morocco  
/ Bosnia / Mozambique  
/ Botswana / Myanmar  
/ Bulgaria / Namibia  
/ Burundi / Nepal  
/ Canada / Nigeria  
/ Cambodia / Pakistan  
/ Cameroon / Palestinian Territories  
/ Central African Republic / Panama  
/ Chad / Papua New Guinea  
/ China / Philippines  
/ Colombia / Peru  
/ Cote D'Ivoire / Romania  
/ Croatia / Russia  
/ Czech Republic / Rwanda  
/ Dem. Rep. of Congo / Sao Tome and Principe  
/ Dominican Republic / Senegal  
/ Ethiopia / Sierra Leone  
/ Fiji / Somaliland  
/ The Gambia / South Africa  
/ Ghana / South Sudan  
/ Rep. of Georgia / Sri Lanka  
/ Guinea / Tajikistan  
/ Haiti / Tanzania  
/ Honduras / Thailand  
/ Hungary / Tunisia  
/ India / Turkey  
/ Iraq / The Bahamas  
/ Italy / UAE  
/ Jamaica / Uganda  
/ Jordan / Ukraine  
/ Kuwait / United Kingdom  
/ Kenya / United States  
/ Laos / Vietnam  
/ Liberia / Western Sahara  
/ Lithuania / Yemen  
/ Macedonia / Zambia  
/ Madagascar / Zimbabwe  
/ Malawi

## Snapshot: 2015 Program Work

ISLP supported more sound and beneficial Natural Resource Management including:

- / In-country training for government officials:
  - / LNG resource development and management, Tanzania
  - / Capacity-building in the mining industry, Afghanistan
  - / Environmental and social issues related to mining, Senegal
  - / Negotiating and drafting mining contracts, Ghana
- / High-level legal analysis of multi-million dollar investment contracts in extractive, agriculture and infrastructure sectors, Liberia and Afghanistan
- / Analysis and drafting of legal and regulatory frameworks, Liberia and Guinea

ISLP's Investment, Trade & Tax team helped to develop and implement policies, as well as build capacity, in support of sustainable economic growth and development. This work included:

- / Capacity-building for government officials with regard to financial and contractual structuring of public-private partnerships, Senegal
- / Drafting of arbitration rules for the East African Court of Justice, as well as arbitration skills training for judges
- / Training officials in public procurement with regard to key legal issues and best practices, Afghanistan and Iraq
- / Drafting of legislation in preparation for WTO accession, Liberia
- / Advising government officials on Phase 1 of the OECD *Global Forum on Transparency and Exchange of Information for Tax Purposes* peer review process, Liberia
- / Advising government on tax information exchange agreements and the application of U.S. FATCA legislation, Liberia

ISLP's Community-Inclusive Development work helped communities achieve more sustainable development outcomes across multiple jurisdictions and varying resource development initiatives, including:

- / Special economic zone, mining, hydropower and infrastructure developments, Myanmar
- / Oil exploration and sand mining, Kenya
- / Water infrastructure development, Australia
- / Hydropower development, Mexico
- / Displacement of subsistence farmers, Cameroon
- / Large-scale agriculture development, Liberia

ISLP's Economic & Social Development work enhanced inclusive economic growth in emerging economies by increasing SME's access to capital, as well as supporting capacity-building among young lawyers to enable them to provide more comprehensive legal advice to local business leaders. For example, ISLP:

/ Developed a mentoring program supporting women lawyers from across Africa, integrating them with General Electric's global oil & gas legal team

/ Published *Impact Investing Private Equity Fund Industry: Legal Considerations*

/ Launched the *Legal Practitioners Track (LPT)* in collaboration with the Global Impact Investing Network (GIIN), a multi-year initiative exploring the key challenges of structuring impact investments and identifying solutions to strengthen the asset class

/ Co-facilitated the inaugural annual LPT event, *Exploring Legal Challenges in Impact Investing*

As a result of ISLP's strategic review, *Anti-Bribery & Corruption*, which had to date been holistically addressed across ISLP's programmatic work, emerged as a dedicated focus area. Extensive background work laying foundations for specific initiatives was undertaken in 2015, including:

/ Reviewing proposed legislation dealing with transparency and accountability issues relating to a new energy regulatory body, Ukraine

/ Assisting *Transparency International* with various projects, including investigations into the actions of the former President of Panama

/ Continuing assistance with potential legal actions in the UK against a UK parent of a DRC subsidiary

ISLP's Civil Society Space work increasingly focused on empowering and supporting watchdog groups and journalists working to expose government corruption and corporate abuses, particularly in areas related to the development of extractive resources and similar large-scale projects.

Representative work included:

/ Providing pre-publication reviews to reduce risks associated with the publication of investigative reports on business, development and human rights issues for three watchdog NGOs

/ Representing the head of an NGO in ongoing libel suits brought as a result of publication of a report on an illegal arms trafficking ring in Mauritius

/ Delivering defamation primer and advice on freedom of information laws, as well as newsroom-style training, for a prominent European human rights NGO

/ Supporting two NGOs affected by restrictive foreign agent laws in Russia and Azerbaijan

/ Providing training and tools to help Russian and Ukrainian media lawyers bring freedom of expression cases before the ECHR

/ Writing an amicus curiae brief on behalf of media NGOs in a freedom of information appeal connected to an extractive industry scandal in Peru

## Celebrating 15 Years

*I am proud ISLP has continued in this, its 15th year, to make a difference for individuals, civil society and developing country governments through the work of highly experienced lawyers acting where lawyers matter most. I look forward to the organization's continued growth, made possible through the support of our funders and dedication of our staff and volunteers.*

Joseph C. Bell, *Board Chair, ISLP*



Beatrice Moritz Photography

*As co-chair of ISLP's 15th Anniversary event, I was encouraged by President Clinton's optimism about good things happening across the developing world, as well as in agreement with his commitment to supporting anti-corruption measures, an area where ISLP will continue to play a significant role.*

Hon. Kathryn A. Oberly, *Board Member, ISLP*

- 2000 / ISLP founded by Tony Essaye and Robert Kapp
- 2002 / First legal expert deployed to provide in-country legal assistance, Cambodia
- 2004 / *Commercial Law Training Program* launches in South Africa, later expanding to Botswana, Namibia, Tanzania and Zambia
- 2005 / World Bank partners with ISLP in support of power development for the Government of Rwanda
- 2005 / Long-term partnership with the Government of Liberia commences, with renegotiation of major concession agreements with Arcelor Mittal and Firestone Rubber
- 2006 / *International Trade Negotiations Training Program* launches, in partnership with the African Centre for the Constructive Resolution of Disputes
- 2009 / Launch of long-term program of support to Government of Tanzania
- 2011 / Merger with the *International Lawyers Project* to form ISLP-UK
- 2013 / Launch of long-term program of support to Government of Senegal
- 2013 / First country-focused program established in Myanmar, with designated grants from the Open Society and GE foundations
- 2014 / *The American Lawyer* awards Global Citizenship Lifetime Achievement Award to ISLP for work in Liberia
- 2014 / Society of Trust and Estate Practitioners (STEP) selects ISLP-UK as its 2015 charity partner
- 2015 / 15th Anniversary of ISLP; announcement of refined mission and strategy
- 2015 / Launch of long-term program of support to Government of Ghana
- 2015 / *Lawyers for Resource Justice* launches in collaboration with Namati and Avaaz
- 2015 / *Legal Practitioners Track* launches in collaboration with the GIIN



## Leadership: Natural Resource Management

*ISLP and the New Partnership for Africa's Development (NEPAD) jointly convened a regional dialogue forum for government officials and policy-makers from West and Central African governments to examine tax-related issues in the extractive industries.*

**The Client:** New Partnership for Africa's Development (NEPAD)

**The Brief:** Facilitate a forum to exchange knowledge and support cooperation on tax issues in the mining and oil & gas sectors

---

Natural resource development has the potential to catalyze major growth in emerging African economies. However, taxes on industry actors have historically been inadequate, with revenues collected all too often not allocated for the wider public good. To address this issue, NEPAD, a technical body within the African Union, approached ISLP for assistance in convening a regional forum to discuss ideas around sound fiscal policies that leverage income from natural resource development to better fund sustainable and inclusive economic growth.

ISLP provided technical and legal advice to help structure and facilitate a three-day regional meeting, which took place in Dakar, Senegal in September 2015. Top international tax experts, drawn from ISLP's extensive network, brought

private practice, governmental and academic experience to the meeting, offering a unique opportunity for senior officials from West and Central African governments to collaborate to find solutions with regard to issues of taxation.

---



ISLP continued to play an active role at the [G7 CONNEX Initiative](#), participating in the Fifth Meeting of the Policy Dialogue on [Natural Resource-Based Development](#) in December 2015. ISLP provided targeted advice to developing countries with significant extractive resources, and strengthened assistance for complex contract negotiations.



## Spotlight: Myanmar

*ISLP continued to build its portfolio of project work in Myanmar with a refined focus on [Community-Inclusive Development](#), supporting local lawyers and civil society organizations to achieve more equitable outcomes for marginalized communities.*

**The Client:** [EarthRights International](#)

**The Brief:** [Improve engagement with villagers impacted by the Thilawa special economic zone](#)

---

ISLP provided support to EarthRights International for the benefit of villagers impacted by the establishment of the Thilawa special economic zone (SEZ). The villagers, none of whom were properly consulted during the environmental impact assessment, continued to face challenges with regard to land confiscation, inadequate compensation, poor relocation conditions and loss of traditional livelihoods.

ISLP's legal team [prepared community leaders for negotiations](#) with investors, while also encouraging

SEZ operators and corporate tenants to develop a plan for appropriate compensation and long-term community engagement. Additionally, ISLP assisted with designing an interim grievance mechanism to afford community members the ability to seek redress for harms suffered, and continues to assist with the design of a permanent, community-driven grievance mechanism.

## Spotlight: East Africa

*ISLP continued its program of support to civil society and communities in Kenya's Kerio Valley, helping to build oversight capacity with regard to oil exploration and development in the region.*

**The Client:** Kerio Valley Community Organization (KVCO)

**The Brief:** Promote meaningful community engagement with regard to oil exploration in the Kerio Valley

---

As part of its ongoing work, ISLP supported the efforts of KVCO to gain access to timely and thorough information regarding the short- and long-term development plans of Tullow Oil, and to engage with project proponents to ensure the communities' rights and development needs were respected.

Together with NGO partner the Justice & Corporate Accountability Project (JCAP), ISLP provided strategic and technical advice to help KVCO interact more effectively with Tullow representatives and relevant government agencies. Additionally, ISLP and JCAP, in

partnership with KVCO and Nairobi-based Strathmore Extractives Industry Centre, led two train-the-trainers workshops to educate 100 community leaders with regard to their legal rights, the risks and benefits of oil development, and how to effectively engage with private sector developers. Each participant committed to train an additional 100 people in and around their home villages, further building capacity and empowering Kerio Valley residents.

*ISLP, in partnership with the Columbia Center on Sustainable Investment (CCSI), launched a comprehensive training program for Tanzania's Government Negotiation Team (GNT).*

**The Client:** UONGOZI Institute, Government of Tanzania

**The Brief:** Facilitate training for GNT with regard to LNG development

---

Following a series of significant gas discoveries in 2011, Tanzania's Ministry of Energy and Minerals nominated a permanent, dedicated multidisciplinary team to undertake negotiations with multinational oil companies to ensure the country benefitted fully from the development of this important non-renewable resource. The UONGOZI Institute, the body responsible for developing a training program for the GNT, sought the specialized expertise of CCSI and ISLP to help design a program to support this work.

Under UONGOZI's auspices, and as a part of on-going assistance, CCSI and ISLP implemented three

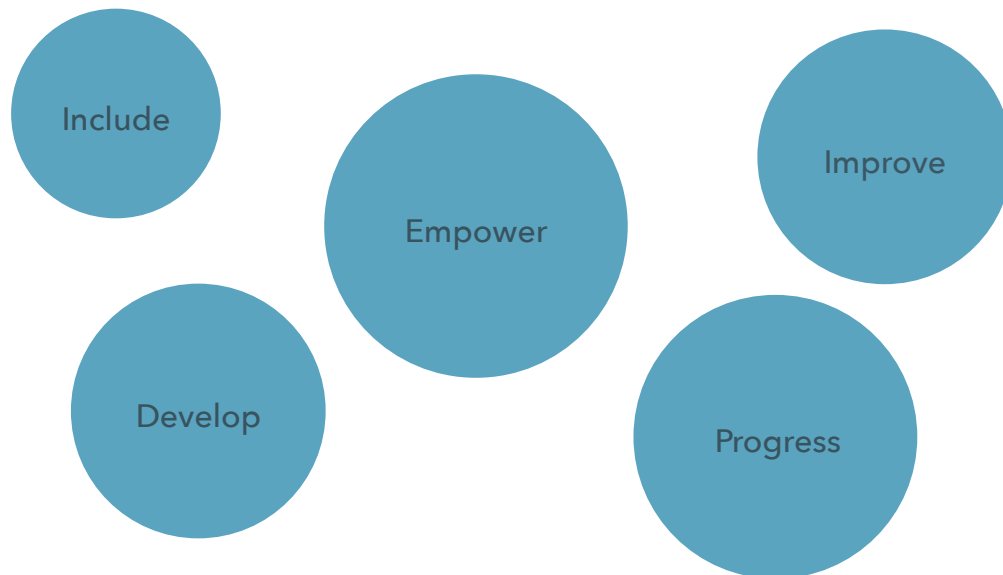
trainings for the GNT focused on negotiation skills, as well as better understanding of the substantive issues critical to establishing a shared vision for Tanzania's oil and gas sector. These issues included how to develop and legally structure an LNG project and related tax regimes, effective leveraging of local content, building partnerships with civil society and other stakeholders, and **mitigation of community and environmental impact.**

## Leadership: Impact Investing

### Impact Investing

While the bulk of impact investment to date has been made by private investment fund managers and development finance institutions, mainstream financial institutions and global foundations are increasingly looking at impact investing models to achieve financial, as well as intentional, [measurable social returns](#).

Supporting innovative commercial solutions to address social and civic challenges across different geographies and sectors strongly aligns with ISLP's [Economic & Social Development](#) focus area, and has the potential to be a powerful driver of equitable and sustainable growth.



In 2015, ISLP, in [partnership](#) with the Global Impact Investing Network (GIIN), launched the GIIN-ISLP [Legal Practitioners Track \(LPT\)](#), a program to encourage legal experts in the field of impact investing to exchange ideas on legal challenges that arise in the financing and structuring of this fast-growing asset class.

According to the GIIN's *Annual Impact Investor Survey*, more than 150 of the world's leading impact investors committed in excess of \$15 billion to impact investments in 2015, with more than \$77 billion in total impact assets under management reported at year-end.

Open to affiliates of both ISLP and the GIIN, LPT offers opportunities for engagement including:

- / In-person participation at LPT's annual meeting, a day of [structured working sessions](#) on topics such as alternative fund structures, blended finance, cross-border transactions, and impact efficacy
- / *Legal Trackers*, [periodic briefing papers](#) analyzing key regulatory and development issues identified by LPT's members
- / Private *LinkedIn* group for members, which offers updates on innovations around structuring and deploying impact investments, as well as latest developments, regulatory or otherwise
- / [Webinars](#) for LPT members on topics that advance impact investing practices

## LPT Advisory Committee:

/ **Tom Brunner**

*Partner and General Counsel,  
LeapFrog Investments*

/ **Luke Fletcher**

*Partner and Head of Social Finance,  
Bates, Wells & Braithwaite*

/ **Christopher Garner**

*Senior Counsel, FMO*

/ **Jeffrey Hom**

*General Counsel,  
Omidyar Network*

/ **Joshua Mintz**

*Vice President, General Counsel, and  
Secretary, MacArthur Foundation*

/ **Lisa Montez**

*Deputy General Counsel,  
MacArthur Foundation*

/ **Waide Warner**

*Senior Counsel, Davis Polk  
Senior Research Fellow at the Initiative for  
Responsible Investment, Harvard Kennedy  
School of Government*



## Case Study: AGOA

*Sasa Designs for the Deaf, a Kenya-based artisanal crafts cooperative, faced uncertainty about whether its products could continue to be exported duty-free into the United States under provisions in the [Africa Growth and Opportunity Act \(AGOA\)](#).*

**The Client:** [New Markets Lab \(NML\)](#), on behalf of Sasa Designs for the Deaf

**The Brief:** [Evaluation of duty-free trade benefits](#)

---

Sasa had been exporting artisanal crafts to the U.S. for some time, facilitated by the duty-free access to U.S. markets it received under AGOA and its companion program, the Generalized System of Preferences (GSP). For a small enterprise like Sasa, duty-free access is instrumental, as without it trade would be prohibitively expensive.

Due to discrepancies among various tariff schemes, however, it was unclear if Sasa would be able to continue to export its products to the U.S. free of duties under AGOA after the GSP expired in 2013. Having met Sasa in Nairobi, New Markets Lab (NML), a legal and regulatory think-tank and innovation lab that seeks to open new markets in developing countries through legal reforms, partnered with ISLP to investigate these discrepancies. ISLP in turn recruited a team of lawyers from Crowell & Moring LLP, including experts in government relations, public policy, customs and trade policy, to review relevant documents and prepare a summary brief.

Together NML, ISLP, and the team from Crowell & Moring identified [duty-free benefits under AGOA were in jeopardy](#) for products that also received duty-free status under GSP due to the U.S. International Trade Commission's (ITC) tariff schedule classification. Their resulting White Paper, submitted to the ITC, U.S. Department of State, and Office of the United States Trade Representative, detailed recommendations to correct administrative inconsistencies, all of which were incorporated when AGOA was renewed in the summer of 2015.

The adapted recommendations, in addition to specifically helping Sasa, [ensured entrepreneurs from sub-Saharan Africa could continue duty-free export](#) of artisanal crafts and agricultural products to the United States.

## NGO Partners

*A U.S. Supreme Court justice once famously wrote, 'Freedom of thought and speech is the matrix, the indispensable condition of nearly every other form of freedom.'*

*Our pro bono media lawyers, working abroad with our partners, commit to realizing this vision of a free and independent press.*

Richard N. Winfield, *Treasurer, ISLP*

Strength

Collaboration

Partnership

Leadership

Team-Building

ISLP is proud to collaborate with leading nonprofit organizations, and is grateful to the following groups for their expertise and commitment to just, accountable and inclusive development:

- / American Bar Association Center for Human Rights
- / Avaaz
- / Center for Democracy and Rule of Law
- / ChildPact
- / Child Rights International Network
- / Columbia Center on Sustainable Investment
- / Commonwealth Human Rights Initiative
- / EarthRights International
- / Equal Education Law Centre
- / Foundation for a Unified Business Law in Africa
- / Global Impact Investing Network
- / International Law Institute -  
African Centre for Legal Excellence
- / IREX Europe
- / Jose Alvear Restrepo Lawyers' Collective
- / Justice & Corporate Accountability Project
- / Legal Resources Centre
- / Mass Media Defence Centre
- / Namati
- / Natural Resource Governance Institute
- / New Markets Lab
- / Open Society Justice Initiative
- / Strathmore Extractive Industry Centre
- / Transparency International
- / Women's Legal Center

## Legal Partners

ISLP's work would not have been possible without the pro bono contributions of a large pool of experienced and dedicated lawyers from more than 50 firms and barrister's chambers that generously contributed substantive legal analysis and strategic advice to clients.

We are grateful for the support of our legal partners, and for their aligned commitment to just, accountable and inclusive development.

- / 25 Bedford Row
- / Allen & Overy
- / Alston & Bird
- / Arnold & Porter
- / Artus Wise
- / Ashurst
- / Baker & McKenzie
- / Ballard Spahr
- / Bingham Greenebaum Doll
- / Blakes
- / Bryan Cave
- / Chaffe McCall
- / Chaffetz Lindsey
- / Clifford Chance
- / Clyde & Co
- / CMS
- / Concern-Dialog Law Firm
- / Covington & Burling
- / Crowell & Moring
- / Davis Polk
- / Dechert
- / Dentons
- / Debevoise & Plimpton
- / DLA Piper
- / Doughty Street Chambers
- / Drummond Woodsum
- / DS Avocats
- / Ernst & Young
- / Fasken Martineau
- / Freshfields
- / Fried Frank
- / Garden Court Chambers
- / General Electric
- / Goulston & Storrs
- / Hahn Loeser
- / Hausfeld
- / Haynes and Boone
- / Herbert Smith Freehills
- / Hogan Lovells
- / Holland & Knight
- / Hughes Hubbard
- / Jones Day
- / K&L Gates
- / Kirkland & Ellis
- / Kraftson Caudle
- / Lamb Building
- / Latham & Watkins
- / Lawler Metzger Keeney & Logan
- / Levine Sullivan Koch & Schulz
- / Mayer Brown
- / McDermott Will & Emery
- / MGB Law Offices
- / Murchison & Cumming
- / Norton Rose Fulbright
- / Osler
- / PricewaterhouseCoopers, Senegal
- / Raue
- / Ropes & Gray
- / Segal McCambridge Singer & Mahoney
- / Simmons & Simmons
- / Slaughter and May
- / Stephenson Harwood
- / Steptoe
- / St Philips Stone Chambers
- / Tanikella Rastogi Associates
- / Tapia, Linares y Alfaro
- / Torys
- / Volciuc-Ionescu SCA
- / Webber Wentzel
- / White & Case
- / Wiley Rein
- / Winston & Strawn





## Donors

ISLP is grateful to our board members and individual donors for their generous support, our legal experts for their tireless commitment, and the following law firms, foundations, corporations and government entities without whom our work would not be possible:

### Law Firm Donors:

/ Akin Gump  
/ Allen & Overy  
/ Alston & Bird  
/ Arnold & Porter  
/ Ashurst  
/ Baker & McKenzie Foundation  
/ Berwin Leighton Paisner  
/ Blakes  
/ Brown Weinraub  
/ Chaffetz Lindsey  
/ Clifford Chance  
/ Covington & Burling  
/ Crowell & Moring  
/ Dechert  
/ Dentons  
/ DLA Piper  
/ Featherstonhaugh,  
Wiley & Clyde  
/ Freshfields  
/ Fried Frank  
/ Herbert Smith Freehills  
/ Hogan Lovells  
/ Hughes Hubbard & Reed  
/ Kirkland & Ellis

/ Latham & Watkins  
/ Levine Sullivan Koch & Schulz  
/ Lewis Baach  
/ Manatt  
/ Mayer Brown  
/ Morgan Lewis  
/ Osler  
/ Simmons & Simmons  
/ White & Case  
/ Wiley Rein  
/ WilmerHale  
/ Winston & Strawn  
/ Zuckerman Spaeder

### Foundation, Corporate & Government Donors:

/ African Legal Support Facility  
/ The American Lawyer Magazine  
/ Anonymous  
/ Bedell Trust  
/ Bertha Foundation  
/ Ernst & Young  
/ GE Foundation  
/ IREX  
/ IREX Europe

/ JAMS Foundation  
/ Kapp Family Foundation  
/ Moriah Fund  
/ National Endowment  
for Democracy  
/ Open Society Foundations  
/ STEP  
/ Thompson Family Foundation  
/ U.S. Department of  
Commerce, Commercial Law  
Development Program  
/ U.S. Embassy, Manila  
/ U.S. Department of State, Bureau  
of Democracy, Human Rights,  
and Labor  
/ U.S.-Russia Peer-to-Peer  
/ The William and Flora  
Hewlett Foundation

## Financials

### CONSOLIDATED STATEMENT OF ACTIVITIES 2015 (not including in-kind donations)

INCOME	US\$
Individual & Board Member Contributions	175,220
Law Firm Contributions	66,748
STEP Campaign*	135,901
Foundation & Corporate Grants	529,886
Government Grants	53,122
15th Anniversary Event (Net)	352,595
Fees for Service	108,266
Other Revenue	9,139
<b>Total Income</b>	<b>1430,877</b>
EXPENSES	
Program Services	1,183,159
Management & General Operational	99,438
Fundraising	184,961
Foreign Currency Translation	12,182
<b>Total Expenses</b>	<b>1,479,740</b>
Change in Net Assets (not including donated services)	(48,863)
DONATED GOODS & SERVICES	
Donated Legal Services & Related Out-of-Pocket Costs	7,744,184
Other Donated Professional Services**	250,000
Donated Occupancy Costs	36,000
<b>Total Donated Services Income</b>	<b>8,030,184</b>

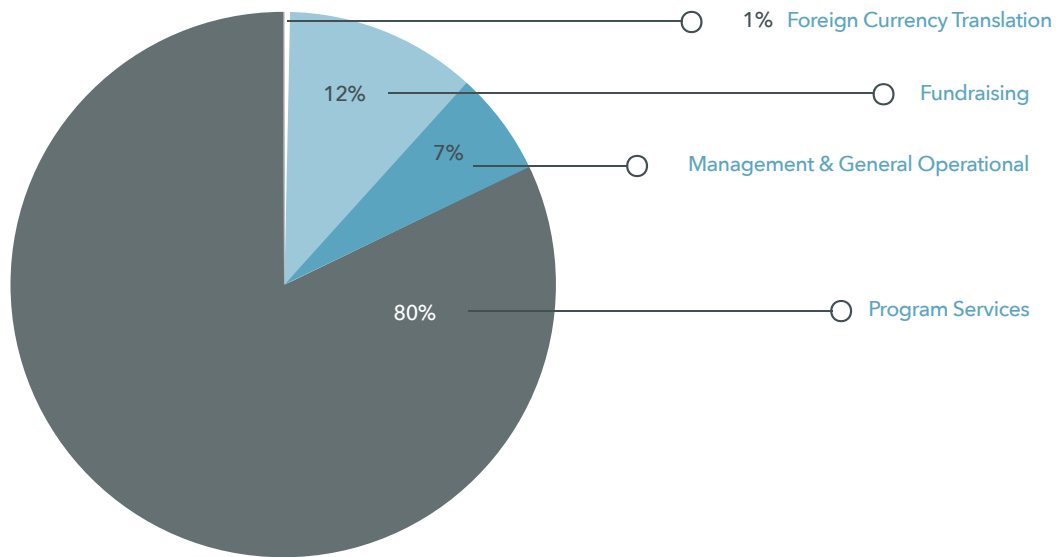
### STATEMENT OF FINANCIAL POSITION

ASSETS	US\$
Cash, Investments & Equivalents	1,259,400
Contributions Receivable	443,419
Other Assets	40,783
<b>Total Assets</b>	<b>1,711,258</b>
LIABILITIES	
Accounts Payable & Accrued Expenses	32,344
<b>Total Liabilities</b>	<b>32,344</b>
NET ASSETS	
Unrestricted Net Assets	641,738
Board Designated Net Assets	340,000
Restricted Net Assets	729,520
<b>Total Net Assets</b>	<b>1,711,258</b>
<b>Total Liabilities &amp; Net Assets</b>	<b>1,743,602</b>

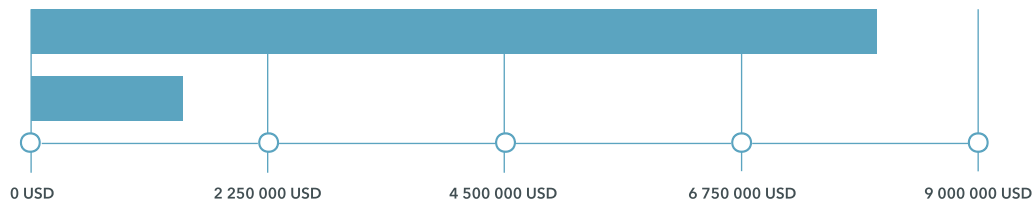
\* Society of Trust & Estate Practitioners

\*\* every \$ donated generated \$5.41 in pro bono services

ISLP allocates **80%** of donor funds to program work



For every \$ raised, ISLP **leveraged** more than \$5 in pro bono legal assistance from its global network



## ISLP Board

### ISLP Board

**Joseph C. Bell, *Board Chair***  
*Of Counsel, Hogan Lovells*

**Ruth Greenspan Bell**  
*Public Policy Fellow, Woodrow Wilson Center*  
*Visiting Scholar, Environmental Law Institute*

**David E. Birenbaum**  
*Of Counsel, Fried, Frank, Harris, Shriver & Jacobson*

**Christopher G. Cross**  
*Partner, Latham & Watkins*

**Boris Dolgonos**  
*Partner, Jones Day*

**Anthony F. Essaye**  
*Retired Partner, Clifford Chance*

**Pamela Hughes**  
*Partner, Blake, Cassels & Graydon*

**Robert Kapp**  
*Of Counsel, Hogan Lovells*

**William C. Kelly, Jr.**  
*Strategic Adviser, Co-Founder,*  
*Stewards of Affordable Housing for the Future*

**Zbigniew Lasocik**  
*Human Trafficking Studies Center, Warsaw University*

**Eric L. Lewis**  
*Partner, Lewis Baach*

**Gail Lione**  
*Senior Counsel, Dentons*

**David Lindsey**  
*Partner, Chaffetz Lindsey*

**Natasha C. Lisman**  
*Arbitrator & Mediator, JAMS*  
*Retired Partner, Sugarman, Rogers,*  
*Barshak & Cohen, P.C.*

**Vivek Maru**  
*Chief Executive Officer, Namati*

**Joel P. Mellis**  
*Retired President, GTE Corporation*

**Juan Méndez**  
*UN Special Rapporteur on Torture*

**Judith Miller**  
*Former Senior Vice President &*  
*General Counsel, Bechtel Group*

**Patrick Murray**  
*Retired Partner, Winston & Strawn*

**Kathryn A. Oberly**  
*Retired Judge, District of Columbia*  
*Court of Appeals*

**Joseph N. Onek**  
*Principal, The Raben Group*

**Juliana Oyegun**  
*Retired Chief Diversity Officer, World Bank*

**Ank Santens**  
*Partner, White & Case*

**Lois Schiffer**  
*Attorney*

**Craig Owen White**  
*Partner, Hahn Loeser & Parks*

**Richard N. Winfield, Treasurer**  
*Retired Partner, Clifford Chance*  
*Professor, Columbia Law School*

**\*Lorraine Sostowski, Volunteer General Counsel**  
*Associate General Counsel,*  
*Dartmouth College*

**\*Megan Gordon, Volunteer Secretary**  
*Partner, Clifford Chance*

## ISLP-UK Board

**Gavin Davies, Board Chair**  
*Partner, Herbert, Smith, Freehills LLP*

**Nicholas Cheffings**  
*Global Chair, Hogan Lovells*

**Richard Gordon, QC**  
*Brick Court Chambers*

**Anthony Inglese**  
*Retired Head of Legal, HM Revenue & Customs*

**Joanna Ludlam**  
*Partner, Baker & McKenzie*

**Patrick Murray**  
*Retired Partner, Winston & Strawn*

**Tunde Ogowewo**  
*Senior Lecturer,*  
*Dickson Poon School of Law, King's College*

**Tim Soutar**  
*Retired Partner, Clifford Chance*

**Richard Tapp**  
*Director of Legal Services, Carillion*

**Dame Fiona Woolf CBE**  
*Partner, CMS Cameron McKenna*  
*Former Lord Mayor of London*

*\*Not a Board member*

## ISLP Staff

Katherine Mulhern  
Executive Director

Lily Bullitt  
Administrative Assistant

Katerina Drisi  
Director, Sustainable Development

Heather Eisenlord  
Director, Economic Justice & Accountability

Susan Hazledine  
Director, ISLP-UK

Marie Kingston  
Program Director, ISLP-UK

Ashley Starr Kinseth  
Program Officer, Economic Justice & Accountability

Diana McGinley  
Kapp-Essaye Fellow

Meredith Ogilvie-Thompson  
Director, Communications & Operations

James Reynolds  
Program Director, ISLP-UK

Lisa Sweat  
Associate Director, Strategy & Development

Carol Thomas  
Finance Manager



International Senior  
Lawyers Project

ISLP  
96 Morton Street  
7th Floor  
New York, NY 10014  
[info@islp.org](mailto:info@islp.org)

ISLP-UK  
Development House  
56-64 Leonard Street  
London EC2A 4LT

